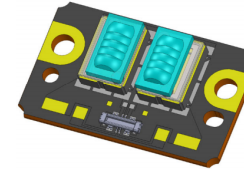




Part No. **NUBB28T**

■ Features

- High Power Multiple Laser Diode (LD) Chip Package
- 10 Collimator Beams
- 10 series connection
- High Heat Dissipation



Standard Operating Conditions

- Forward Current: 3.0A(CW Operation)
- T_m=70°C, ACC (Auto Current Control) Operation

■ Absolute Maximum Ratings

Item	Symbol	Absolute Maximum Ratings	Unit
Forward Current	I _F	3.5	A
Allowable Reverse Current	I _R	85	mA
Storage Temperature	T _{stg}	-40 ~ 85	°C
Operating Temperature	T _m	0 ~ 70	°C

■ Initial Electrical/Optical Characteristics

(T_m=25°C)

Item	Condition	Symbol	Min	Typ.	Max	Unit	
Optical Output Power	I _F =3.0A	P _o	-	(54)	-	W	
Dominant Wavelength	I _F =3.0A	λ _d	449	(455)	461	nm	
Threshold Current	CW	I _{th}	240	-	440	mA	
Slope Efficiency	CW	η	-	(20.2)	-	W/A	
Forward Voltage *1	I _F =3.0A	V _F	-	(40)	-	V	
Beam Pointing Tilt Angle *2	I _F =3.0A	Δθ	-	-	1.2	°	
Beam Divergence *3	Parallel	I _F =3.0A	θ _∥	0	(0.8)	1.6	°
			θ _⊥	-1.5	(0)	1.5	

() are reference figures.

*1: When connected in series with the 10 LD chips.

*2: The beam pointing tilt angle measurement is performed for the total emission area once the LD initiates laser oscillation. To calculate the beam pointing tilt angle, the following equation is used: $\Delta\theta = \sqrt{\Delta\theta_{\parallel}^2 + \Delta\theta_{\perp}^2}$

*3: Full angle at 1/e² from peak intensity (Total Emission Area)

All figures in this specification are measured by Nichia's method and may contain measurement deviations.

**This model is Test Sample for evaluation or design purpose only. Life time is not guaranteed.
The above specifications are for reference purpose only and subjected to change without prior notice.**

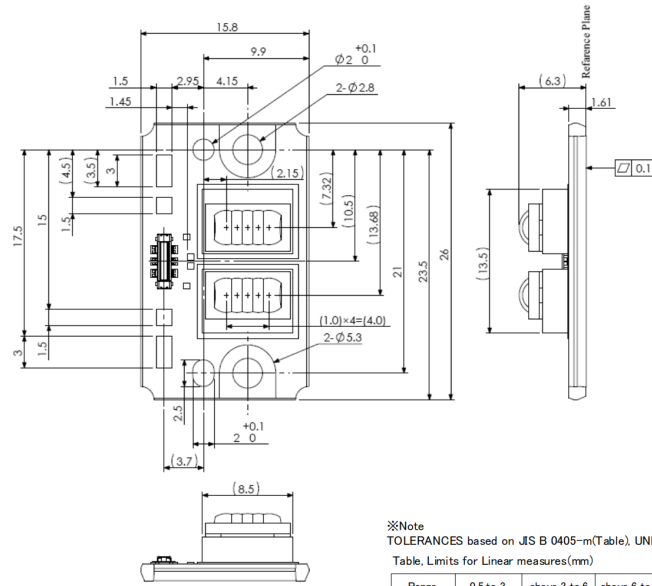
NICHIA CORPORATION
http://www.nichia.co.jp

◆ HEADQUARTERS
491 Oka, Kaminaka-Cho, Anan-Shi, TOKUSHIMA 774-8601, JAPAN
PHONE: +81-884-22-2311 FAX: +81-884-21-0148

◆ CONTACT
TOKYO SALES OFFICE
13F Tamachi Center Building 34-7, Shiba 5-Chome, Minato-Ku, TOKYO 108-0014, JAPAN
PHONE: +81-3-3456-3746 FAX: +81-3-5440-7516



■ Outline Dimensions



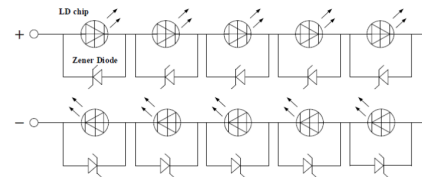
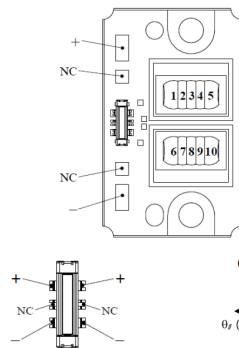
※Note
TOLERANCES based on JIS B 0405-m(Table), UNLESS NOTED

Table. Limits for Linear measures(mm)

Range	0.5 to 3	above 3 to 6	above 6 to 30
Tolerance	±0.1	±0.1	±0.2

Dimensions are in millimeters
() are reference figures

■ LD chips Position No. & Pad Connection



This model does not have a Photo Diode.
This model has a Zener Diode built in as a protection circuit against static electricity.